

Progetto di ampliamento del villaggio turistico “Il Cicero” Patti (ME) (2003-2008)



RILIEVO PLANO-ALTIMETRICO CAMPEGGIO "IL CICERO"

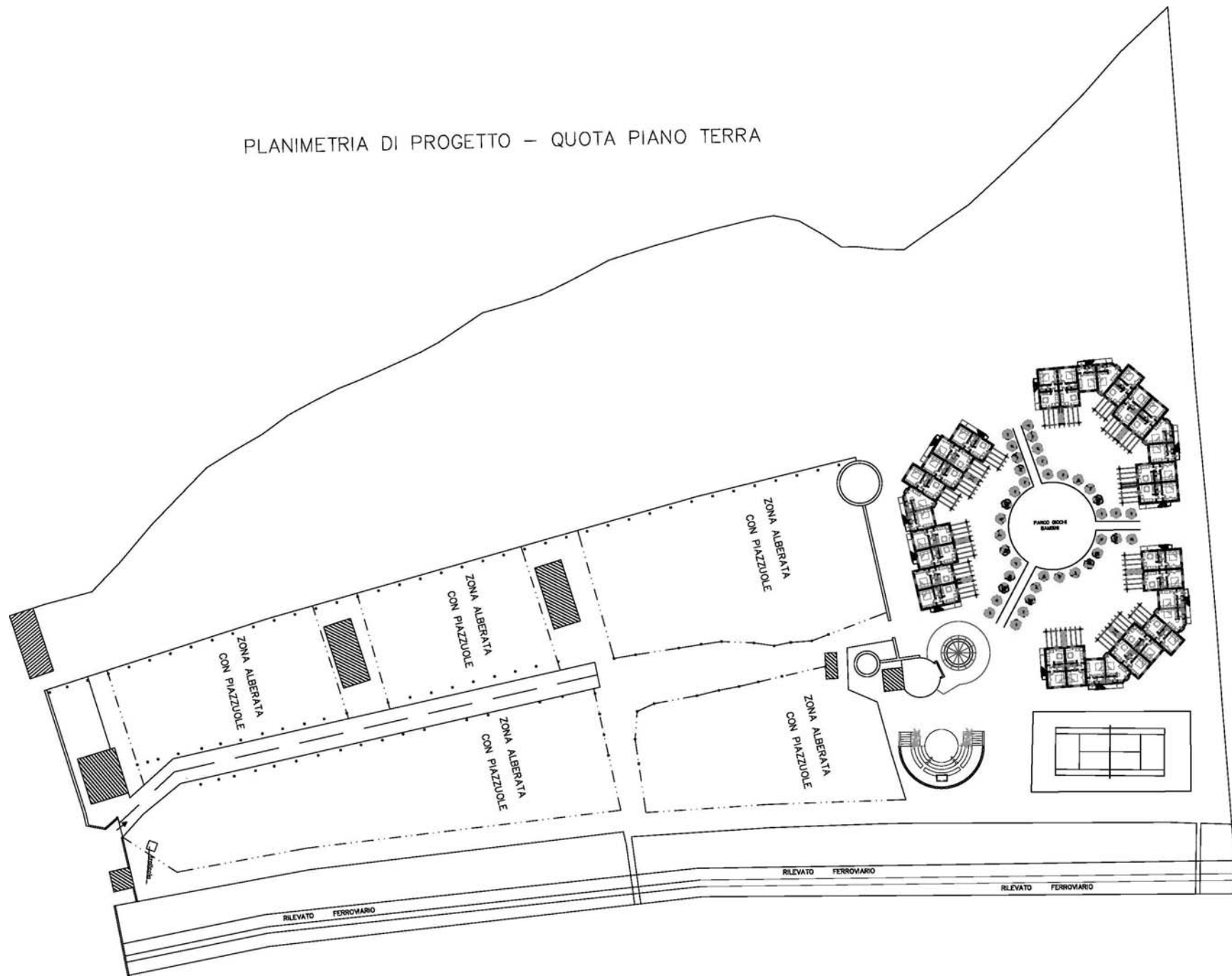
COMMITTENTE: MATRICARDI RUFFO Andrea



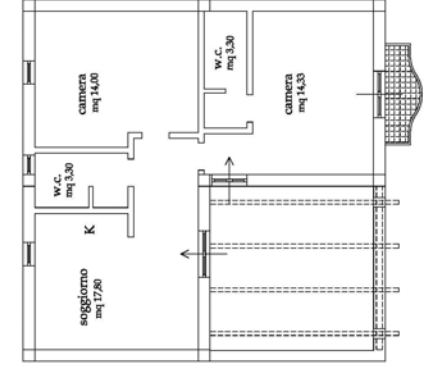
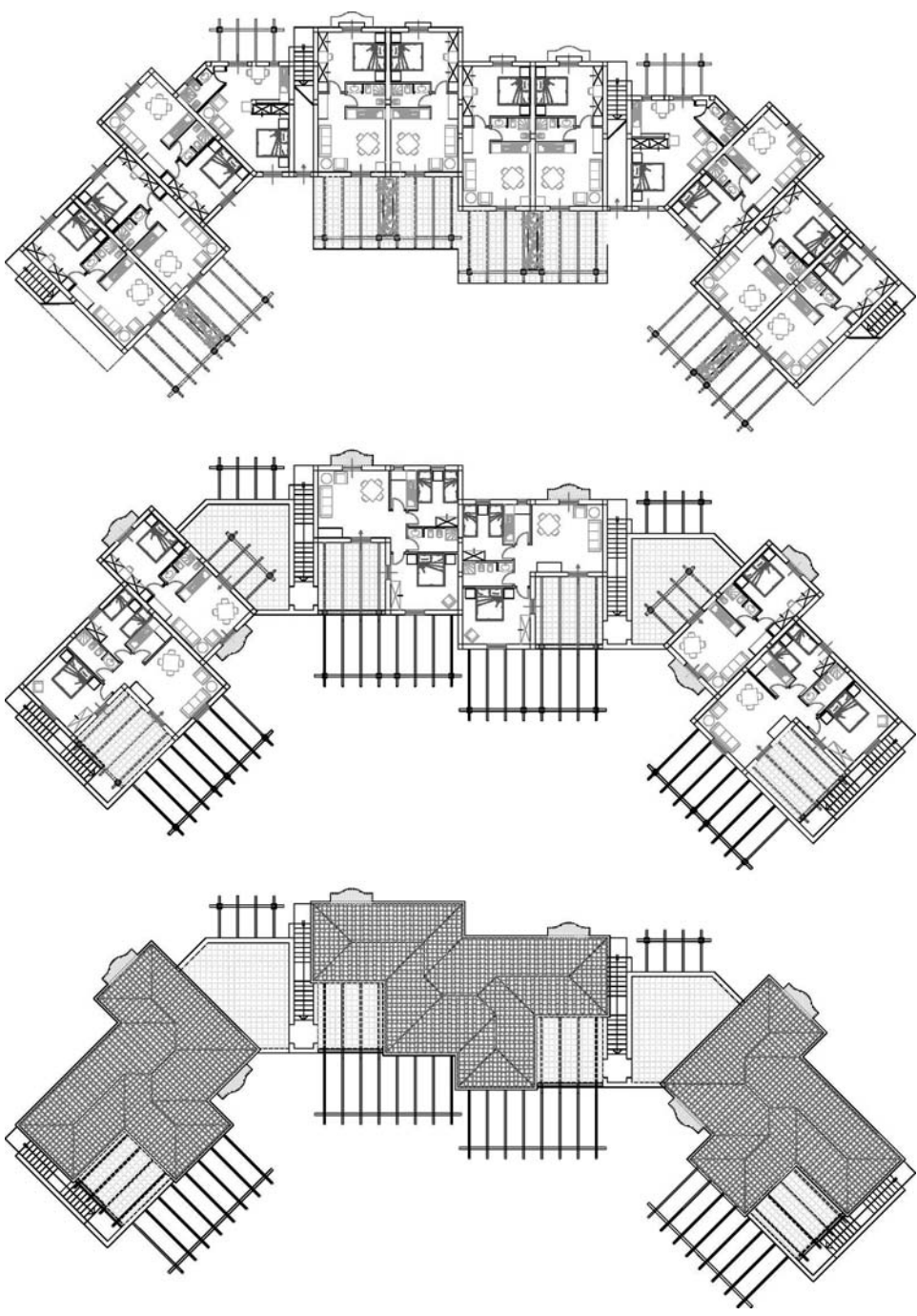
ARENILE



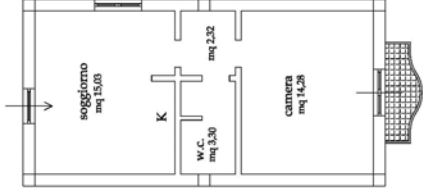
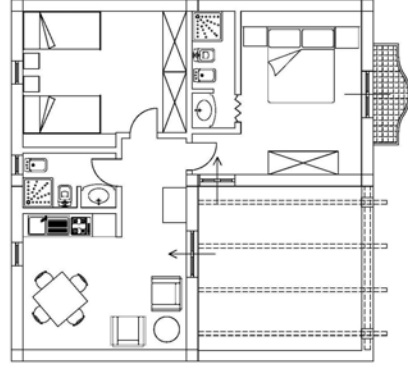
PLANIMETRIA DI PROGETTO – QUOTA PIANO TERRA



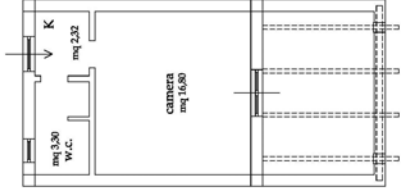
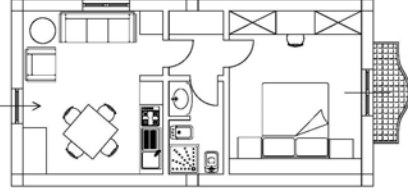




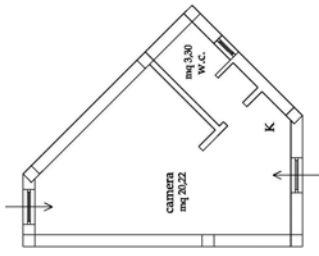
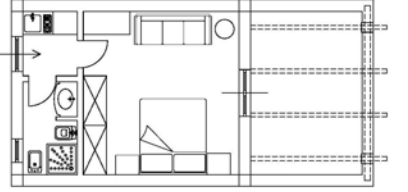
TRI-LOCALE



BI-LOCALE



MONO-LOCALE



TIPOLOGIE DELLE UNITA' ABITATIVE

MONO-LOCALE ANGOLARE

